

Political Institutions in Indonesia

Linkage Master Program Double Degree FIA-Universitas Brawijaya and Japanese Universities

Lecturer : Prof. Dr. Ir. Ginandjar Kartasasmita
jgkar@cbn.net.id
www.ginandjar.com

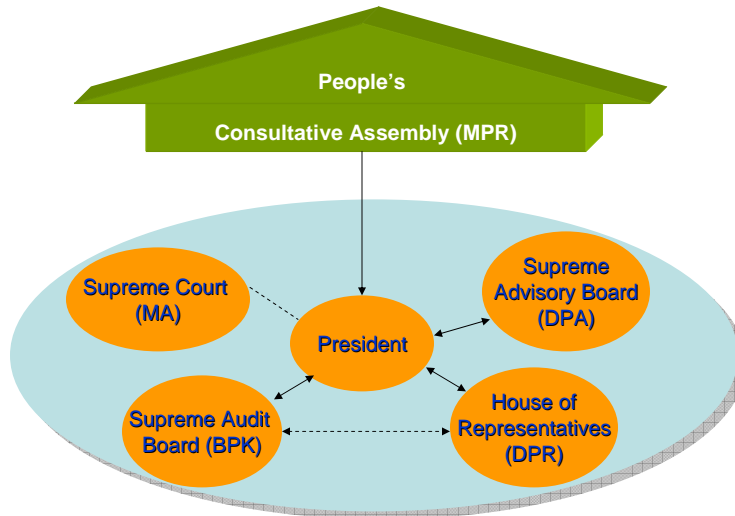
Assistant Professor : Dr.Ir. Deddy S. Bratakusumah, BE, MURP, M.Sc.
deddys@bappenas.go.id

Day-3
Malang, November 13, 2006

The Evolving Political System

| System of Government | Unitarian/ Presidential | Federal/ Parliamentary | Unitarian/ Parliamentary | Unitarian/ Presidential | Unitarian/ Presidential | Unitarian/ Presidential | Unitarian/ Presidential |
|----------------------|--|------------------------|--|---|---|---|---|
| Constitution | 1945 | Federal | Provisional | 1945 | 1945 | 1945 | 1945 (amended) |
| Period | 1945-1949 | 1950 | 1950-1959 | 1959-1966 | 1966-1998 | 1998-2004 | 2004-Now |
| Political Situation | <ul style="list-style-type: none"> The system of government was parliamentary War for Independence Rebellion: Communist (1948), Islamic Extremism | | <ul style="list-style-type: none"> Functioning parliamentary democracy (1955 general election) Political Instability Rebellion: Regional, Islamic Extremism | <ul style="list-style-type: none"> Guided Democracy Campaign to win back Irian Jaya Confrontation with Malaysia and its allies Deteriorating economy Coup attempt 1965 | <ul style="list-style-type: none"> New Order Stability Economic progress Restrained democracy Concentration of power Dominant role of military in politics and governance | Democratization | |
| | | | | | | <ul style="list-style-type: none"> Reforms movement Democratic transition | <ul style="list-style-type: none"> Democratically elected government Democratic consolidation |

Political Institutions: 1945 Constitution

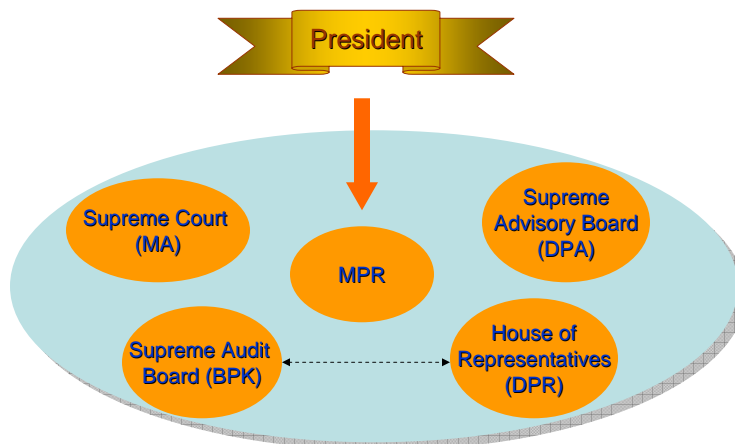


Unibraw2006_Day3

www.ginandjar.com

3

Political Institutions: 1959-1966

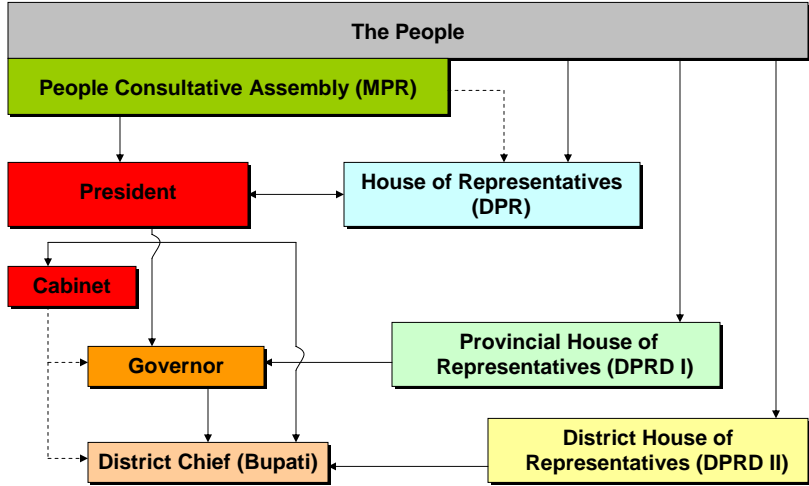


Unibraw2006_Day3

www.ginandjar.com

4

Political Institutions (1966-1999)

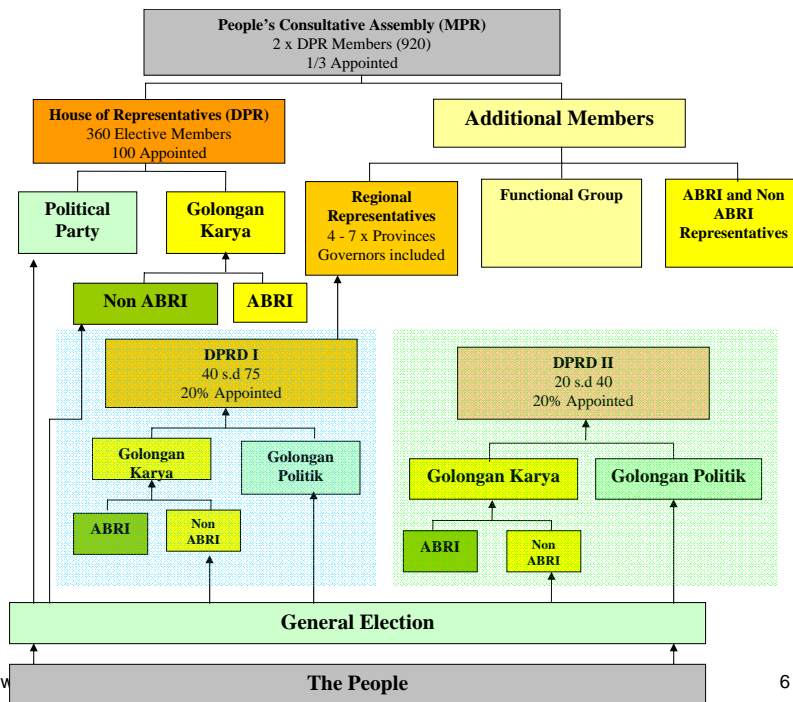


Unibraw2006_Day3

www.ginandjar.com

5

Political Institutions (1966-1999)

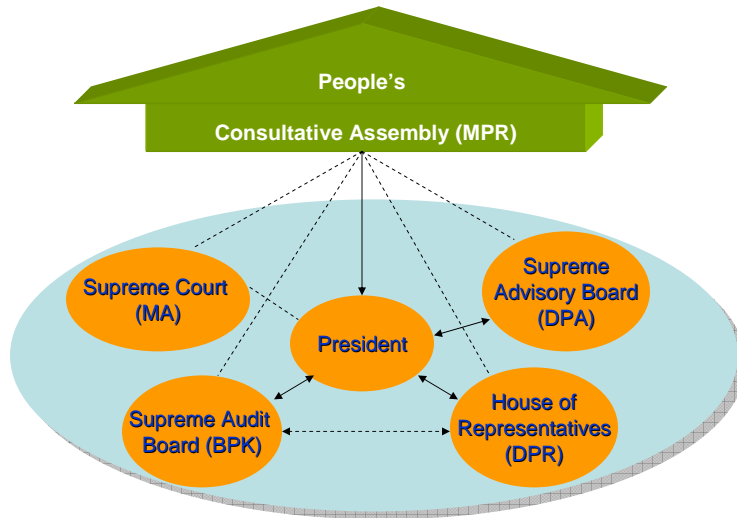


Unibraw

Source: Law No. 19/1969

6

Political Institutions: 1999-2004

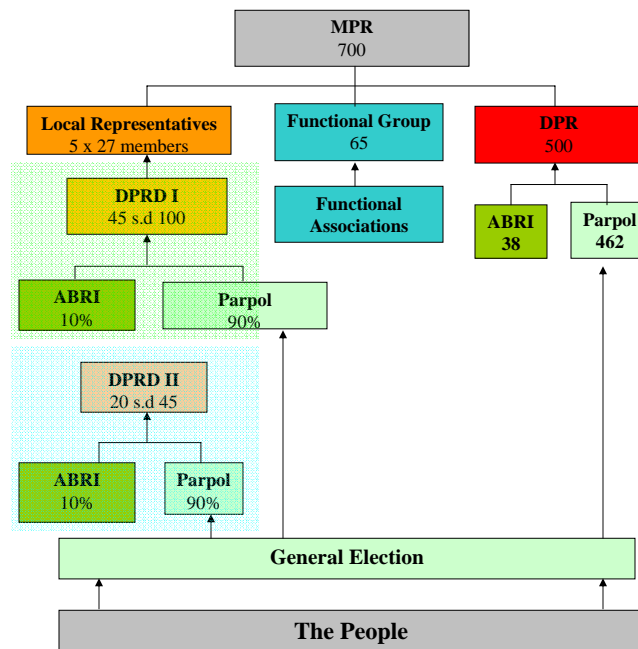


Unibraw2006_Day3

www.ginandjar.com

7

Political Institutions (1999-2004)



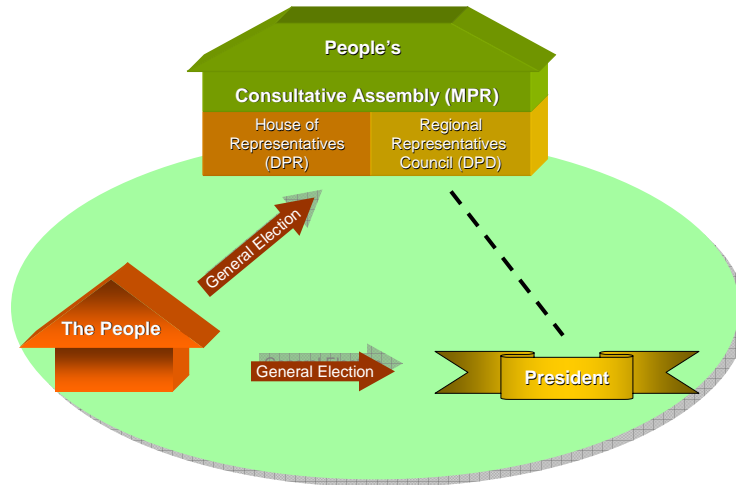
Unibraw2006_Day3

www.ginandjar.com

8

Source: Law No. 4/1999

Political Institutions (2004-Now)

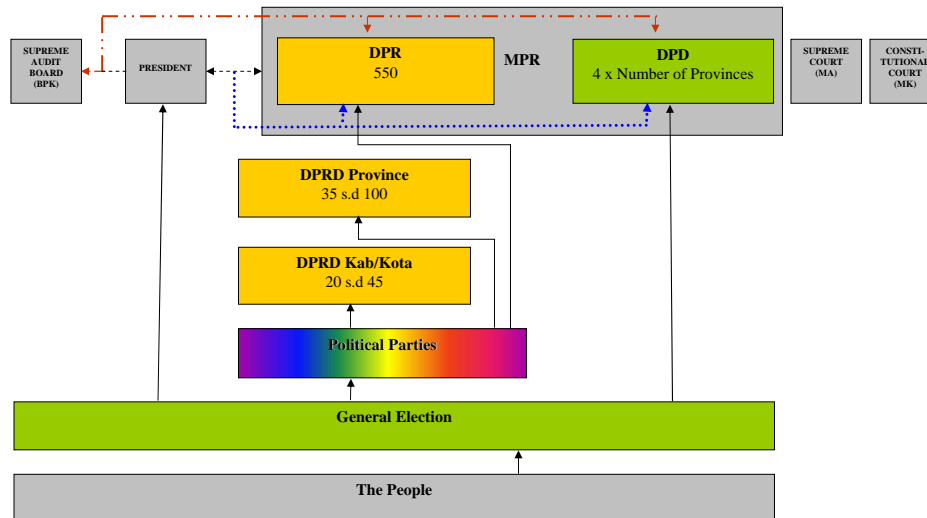


Unibraw2006_Day3

www.ginandjar.com

9

Political Institutions (2004-Now)



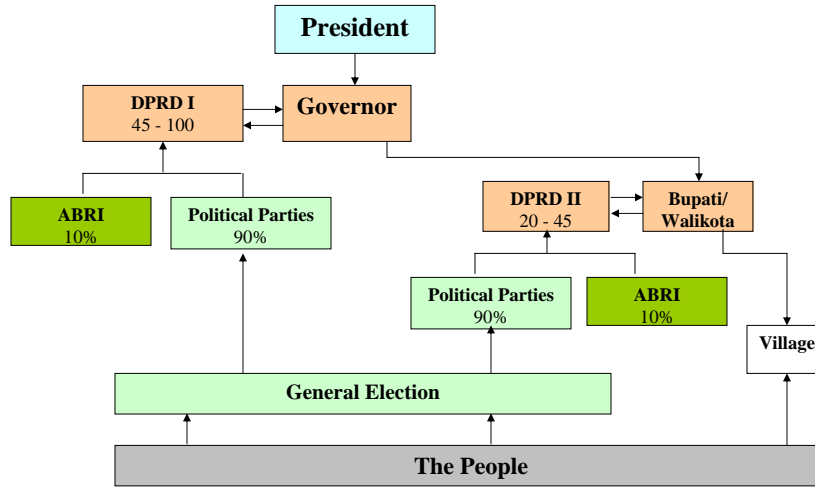
Unibraw2006_Day3

www.ginandjar.com

10

Source: Law No. 22/2003

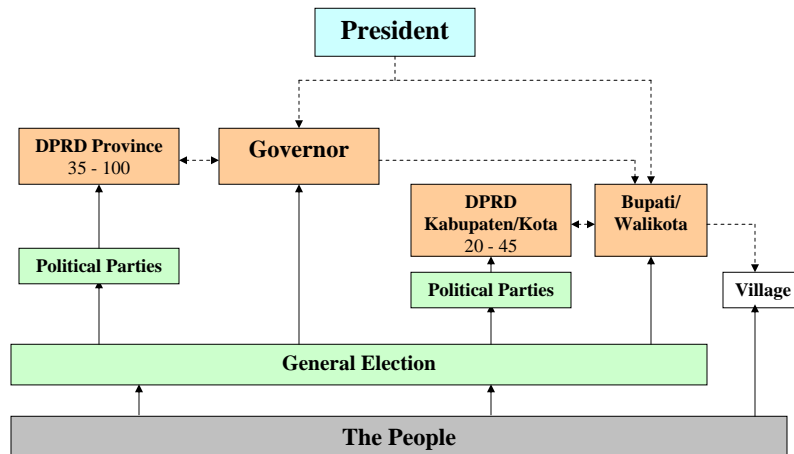
Local Government Political Institutions Before 2004



Sources: Law No. 4/1999 on Arrangement and Position of MPR, DPR, and DPRD
 Law No. 22/1999 on Local Government
 Unibraw2006_Day3 www.ginandjar.com

11

Local Government Political Institutions After 2004



Sources: Law No. 22/2003 on Arrangement and Position of MPR, DPR, DPD and DPRD
 Law No. 32/2004 on Local Government

Unibraw2006_Day3

www.ginandjar.com

12